

 **BOEING**  
COMPONENT  
MAINTENANCE MANUAL

TO: ALL HOLDERS OF SECTION 41 ENTRY/SERVICE DOORS OVERCENTER MECHANISM  
ASSEMBLY COMPONENT MAINTENANCE MANUAL 52-11-85

REVISION NO. 5 DATED MAR 01/96

HIGHLIGHTS

Pages which have been added or revised are outlined below together with the highlights of the revision. Remove and insert the affected pages as listed and enter Revision No. and date on the Record of Revision Sheet.

CHAPTER/SECTION

AND PAGE NO.

DESCRIPTION OF CHANGE

CONTENTS

Edited without technical change and revised IPL.

1

1005,1015

**52-11-85**

HIGHLIGHTS

01.1

Page 1

Mar 01/96



SECTION 41 ENTRY/SERVICE DOORS  
OVERCENTER MECHANISM ASSEMBLY

PART NUMBERS 141T6134-7,-8,-11,-12

COMPONENT MAINTENANCE MANUAL  
WITH  
ILLUSTRATED PARTS LIST

52-11-85

TITLE PAGE

Page 1

Oct 01/92

01.1

144759



REVISION RECORD

- Retain this record in front of manual. On receipt of revision, insert revised pages in the manual, and enter revision number, date inserted and initial.

REVISION NUMBER	REVISION DATE	DATE FILED	BY	REVISION NUMBER	REVISION DATE	DATE FILED	BY



TEMPORARY REVISION AND SERVICE BULLETIN RECORD

BOEING SERVICE BULLETIN	BOEING TEMPORARY REVISION	OTHER DIRECTIVE	DATE OF INCORPORATION INTO MANUAL
52-0056		PRR B12043	OCT 01/92 DEC 01/95

**52-11-85**

TR & SB RECORD

01.1

Page 1

Dec 01/95


**BOEING**  
 COMPONENT  
 MAINTENANCE MANUAL

PAGE	DATE	CODE	PAGE	DATE	CODE
52-11-85			REPAIR 1-1		
			601	OCT 01/92	01.1
			602	BLANK	
TITLE PAGE			REPAIR 2-1		
1	OCT 01/92	01.1	601	OCT 10/84	01
2	BLANK		602	BLANK	
REVISION RECORD			REPAIR 3-1		
1	OCT 10/84	01	601	DEC 01/95	01.1
2	BLANK		602	DEC 01/95	01.1
TR & SB RECORD			REPAIR 4-1		
1	DEC 01/95	01.1	601	OCT 01/92	01.1
2	BLANK		602	BLANK	
LIST OF EFFECTIVE PAGES			ASSEMBLY		
*1	MAR 01/96	01	701	DEC 01/95	01.1
THRU LAST PAGE			702	APR 10/87	01.101
CONTENTS			SPECIAL TOOLS		
*1	MAR 01/96	01.1	901	OCT 10/84	01
2	BLANK		902	BLANK	
INTRODUCTION			ILLUSTRATED PARTS LIST		
1	JUL 10/87	01.101	1001	OCT 10/84	01
2	BLANK		1002	DEC 01/95	01.1
DESCRIPTION & OPERATION			1003	DEC 01/95	01.1
1	JUL 10/87	01.1	1004	DEC 01/95	01.1
2	BLANK		*1005	MAR 01/96	01.1
DISASSEMBLY			1006	DEC 01/95	01.1
301	DEC 01/95	01.1	1007	DEC 01/95	01.1
302	BLANK		1008	BLANK	
CHECK			1009	DEC 01/95	01.1
501	OCT 10/84	01	1010	DEC 01/95	01.1
502	BLANK		1011	DEC 01/95	01.1
REPAIR-GENERAL			1012	DEC 01/95	01.1
601	OCT 01/92	01.1	1013	DEC 01/95	01.1
602	BLANK		1014	DEC 01/95	01.1
			*1015	MAR 01/96	01.1
			1016	DEC 01/95	01.1
			1017	DEC 01/95	01.1
			1018	DEC 01/95	01.1

\* = REVISED, ADDED OR DELETED

**52-11-85**
 EFFECTIVE PAGES  
 CONTINUED Page 1  
 01 Mar 01/96

PAGE	DATE	CODE	PAGE	DATE	CODE
ILLUSTRATED PARTS LIST		CONT.			
1019	DEC 01/95	01.1			
1020	BLANK				

\* = REVISED, ADDED OR DELETED

**52-11-85**

EFFECTIVE PAGES  
LAST PAGE Page 2  
01 Mar 01/96



TABLE OF CONTENTS

<u>Paragraph Title</u>	<u>Page</u>
Description and Operation . . . . .	1
Testing and Trouble Shooting (not applicable)	
Disassembly . . . . .	301
Cleaning. . . . .*[1]	
Check . . . . .	501
Repair. . . . .	601
Assembly. . . . .	701
Fits and Clearances (not applicable)	
Special Tools . . . . .	901
Illustrated Parts List. . . . .	1001

\*[1] Special instructions not required. Use standard industry practices.

**52-11-85**

CONTENTS

Page 1

Mar 01/96

01.1



## INTRODUCTION

The instructions in this manual provide the information necessary to perform maintenance functions ranging from simple checks and replacement to complete shop-type repair.

This manual is divided into separate sections:

- |  |                              |
|--|------------------------------|
| 1. Title Page                                      | 4. List of Effective Pages   |
| 2. Record of Revisions                             | 5. Table of Contents         |
| 3. Temporary Revision &<br>Service Bulletin Record | 6. Introduction              |
|  | 7. Procedures & IPL Sections |

Refer to the Table of Contents for the page location of applicable sections.

The beginning of the REPAIR section includes a list of the separate repairs and a list of applicable standard Boeing practices.

An explanation of the use of the Illustrated Parts List is provided in the Introduction to that section.

All weights and measurements used in the manual are in English units, unless otherwise stated. When metric equivalents are given they will be in parentheses following the English units.

Design changes, optional parts, configuration differences and Service Bulletin modifications create alternate part numbers. These are identified in the Illustrated Parts List (IPL) by adding an alphabetical character to the basic item number. The resulting item number is called an alpha-variant. Throughout the manual, IPL basic item number references also apply to alpha-variants unless otherwise indicated.

**52-11-85**

INTRODUCTION

01.101

Page 1

Jul 10/87





SECTION 41 ENTRY/SERVICE DOORS OVERCENTER MECHANISM ASSEMBLY

DESCRIPTION AND OPERATION

1. The overcenter mechanism assembly consists of two crank assemblies which pivot on a splined drive shaft and a pivot sleeve inside a housing assembly. A link connects the two crank assemblies together.
2. The overcenter mechanism assembly provides an overcenter condition when the door handle is moved to the door latched position. It also prevents any force acting inboard on either the door or the trolley from influencing door handle position.
3. Leading Particulars (Approximate)

Length -- 7 inches

Width -- 4 inches

Height -- 12 inches

Weight -- 15 pounds

52-11-85

DESCRIPTION & OPERATION

01.1

Page 1

Jul 10/87

DISASSEMBLY

NOTE: Disassemble this component only as necessary to complete fault isolation, determine the serviceability of parts, perform required repairs, and restore the unit to serviceable condition.

1. Parts Replacement

NOTE: The following parts are recommended for replacement. Unless otherwise noted, actual replacement of parts may be based on in-service experience.

A. Nuts (15, 40, 85, 105, IPL Fig. 1)

2. Disassembly (IPL Fig. 1)

A. Remove lockwire and remove bolt (95), washer (100) and nuts (105).

B. Remove bolt (30), washer (35) and nut (40) securing link (70) and crank assembly (110). Separate link (70) from crank assembly (110).

C. Rotate crank assembly (45) to gain access to nut (15) and remove nut (15), washer (10) and bolt (5A).

D. Remove shaft (20), spacer rings (25, 27) and crank assembly (45) from housing assembly (135).

E. Remove bolt (30), washer (35) and nut (40) and separate link (70) from crank assembly (45).

NOTE: Do not disassemble crank assembly unless necessary for repair or replacement.

F. Remove nut (85), washers (80) and bolt (75A) and remove crank assembly (110), spacer (25) and sleeve (90) from housing assembly (135).

NOTE: Do not disassemble crank assembly (110) or housing assembly (135) unless necessary for repair or replacement.

**52-11-85**

DISASSEMBLY

01.1

Page 301

Dec 01/95



CHECK

1. Check all parts for obvious defects in accordance with standard industry practices.
2. Magnetic particle check the following parts (IPL Fig. 1) per 20-20-01.
  - A. Drive shaft (20)
  - B. Crank (65, 130)
  - C. Sleeve (90)
3. Penetrant check the following parts (IPL Fig. 1) per 20-20-02.
  - A. Cap (175)
  - B. Housing (205, 225)

52-11-85

01  
CHECK  
Page 501  
Oct 10/84

REPAIR – GENERAL1. Content

- A. Repair, refinish and replacement procedures are included in separate sections as follows:

<u>P/N</u>	<u>NAME</u>	<u>REPAIR</u>
141T6166	CRANK	1-1
141T6167	CRANK	2-1
141T6172	HOUSING	3-1
- - -	MISC PARTS REFINISH	4-1

2. Standard Practices

- A. Refer to the following standard practices as applicable, for details of procedures in individual repairs.

20-30-02 Stripping of Protective Finishes  
 20-30-03 General Cleaning Procedures  
 20-41-01 Decoding Table for Boeing Finish Codes  
 20-41-02 Application of Chemical and Solvent Resistant Finishes  
 20-43-01 Chromic Acid Anodizing  
 20-50-03 Bearing Installation and Retention

3. Materials

NOTE: Equivalent substitutes may be used.

A. Primer -- BMS 10-11, type 1 (Ref 20-60-02)

B. Deleted

C. Sealant -- BMS 5-95 (Ref 20-60-04)

D. Grease -- MIL-G-23827 (Ref 20-60-03)

# 52-11-85

REPAIR-GENERAL

01.1

Page 601

Oct 01/92

CRANK ASSEMBLY – REPAIR 1-1

141T6166-5, -7

**NOTE:** Refer to REPAIR-GEN for list of applicable standard practices. For repair of surfaces which may only require stripping and restoration of original finish, refer to REFINISH instruction.

1. Bushing (120) Replacement

- A. Remove bushing.
- B. Install replacement bushing per 20-50-03.
- C. Fillet seal bushing flange with wet sealant BMS 5-95.

2. Bushings (115, 125) Replacement

- A. Remove bushings.
- B. Install bushing (115) per 20-50-03.
- C. Install bushing (125) inside bushing (115) using grease. Secure bushing (125) with masking tape for shipment and storage to prevent loss of bushing prior to installation.

3. Refinish

- A. Crank (130) -- Passivate (F-17.09) all over. Material: 17-4PH CRES (Opt: 15-5PH CRES), 180-200 ksi.

**52-11-85**

REPAIR 1-1

01.1

Page 601

Oct 01/92

CRANK ASSEMBLY - REPAIR 2-1

141T6167-3

NOTE: Refer to REPAIR-GEN for list of applicable standard practices. For repair of surfaces which may only require stripping and restoration of original finish, refer to REFINISH instruction.

1. Bushings (50, 55) Replacement

- A. Remove bushings (50, 55).
- B. Install bushing (50) then install bushing (55) per 20-50-03.

2. Bushing (60) Replacement

- A. Remove bushing.
- B. Install replacement bushing per 20-50-03.
- C. Fillet seal bushing flange with wet sealant, BMS 5-95.

3. Refinish

- A. Crank (65) -- Passivate (F-17.09) all over. Material: 15-5PH CRES, 150-170 ksi.

**52-11-85**

REPAIR 2-1

01

Page 601

Oct 10/84

HOUSING ASSEMBLY – REPAIR 3-1

141T6172-17, -18, -33, -34

NOTE: Refer to REPAIR-GEN for list of applicable standard practices. For repair of surfaces which may only require stripping and restoration of original finish, refer to REFINISH instruction.

1. Cap (175) Replacement

- A. Remove bolt (160), washer (165), nut (170A) and cap (175).
- B. Apply wet sealant, BMS 5-95 to faying surfaces of cap (175) and housing (205, 225).
- C. Install cap on housing and secure with bolt (160), washer (165) and nut (170).

| 2. Bearing (150, 153) Replacement

- A. Remove ring (155) and bearing (150, 153).
- B. Install replacement bearing and ring per 20-50-03.

| 3. Bearing (140A) Replacement

- A. Remove bearing (140A) and sleeve (145).

| CAUTION: USE CARE WHEN HANDLING BEARING (140A). BEARING CAN EASILY BE CONTAMINATED DURING HANDLING; THE SPHERICAL INNER RACE CAN BE ROTATED OUT OF POSITION, THEREBY EXPOSING THE ROLLER ELEMENTS.

- B. Install replacement bearing and sleeve per 20-50-03 using wet primer.
- C. Check that gap in sleeve (145) is 0.062-inch maximum. Fill gap with sealant, BMS 5-95.

**52-11-85**

REPAIR 3-1

01.1

Page 601

Dec 01/95

**4. Bearings (140B, 140C) Replacement**

- A. Remove bearing (140B, 140C).
- B. Install replacement bearing per 20-50-03.
- C. Apply wet sealant, BMS 5-95 between the bearing and the housing.
- D. Install retainer (142) with rivets (143).

**5. Refinish**

- A. Housing (205, 225) -- Chromic acid anodize and apply one coat of primer (F-18.13) all over except omit primer in bores for bearing. Material: Al alloy.

**52-11-85**

REPAIR 3-1

01.1

Page 602

Dec 01/95



MISCELLANEOUS PARTS REFINISH – REPAIR 4-1

1. Repair of parts listed in Fig. 601 consists of restoration of the original finish.

IPL FIG. & ITEM	MATERIAL	FINISH
<u>Fig. 1</u>		
Shaft (20)	4330M steel, 220-240 ksi	Cadmium-titanium plate (F-15.01) on all exterior surfaces and apply 2 coats of primer (F-20.03) on all interior surfaces.
Ring (25, 27)	303 steel	Cadmium plate (F-15.02) all over.
Sleeve (90)	15-5PH CRES, 150-170 ksi	Cadmium plate (F-15.02) all over except in bore.
Cap (175)	15-5PH CRES, 150-170 ksi	Cadmium plate and apply 1 coat of primer (F-16.01) all over except omit primer on 0.5 by 0.5 inch exterior surface.

Refinish Details  
Figure 601

**52-11-85**

REPAIR 4-1

01.1

Page 601

Oct 01/92

ASSEMBLY1. Equipment

NOTE: Equivalent substitutes may be used.

A. Rigging pin -- 0.310 inch diameter

2. Assembly

A. Attach link (70) to crank assembly (45) using bolt (30), washer (35) and nut (40).

CAUTION: USE CARE WHEN HANDLING HOUSING ASSEMBLY (135). BEARING (140A) IN HOUSING ASSEMBLY (135) CAN EASILY BE CONTAMINATED DURING HANDLING; THE SPHERICAL INNER RACE CAN BE ROTATED OUT OF POSITION, THEREBY EXPOSING THE ROLLER ELEMENTS.

B. Position crank assembly (45) and two spacer rings (25) in housing assembly (135) and install shaft (20). Locate spacer rings (25) and nut (40) on the spline teeth side of shaft (20).

C. Secure crank assembly (45) to shaft (20) with bolt (5A), washer (10) and nut (15). Locate fasteners so that bolthead is facing inside the housing assembly (135).

D. Position crank assembly (110) and spacer ring (25, 27) in housing assembly (135) with spacer ring on the same side as spline teeth of shaft (20). Install sleeve (90) to secure crank assembly (110) in housing assembly (135).

E. Secure crank assembly (110) to sleeve (90) with bolt (75A), washers (80) and nut (85). Check that sleeve (90) is centered in housing assembly (135) within 0.03 inch. Remove fasteners and reverse direction of sleeve if required.

F. Attach link (70) to crank assembly (110) using bolt (30), washers (35) and nut (40) with nut on the spline teeth side of shaft (20).

G. Install bolt (95), washer (100) and nuts (105) on crank assembly (110).

H. Install rigging pin thru holes in crank assembly (110) and housing assembly (135) and adjust bolt (95) until bolthead just contacts cap (175) on housing assembly (135). Tighten nuts (105) to secure bolt (95).

**52-11-85**ASSEMBLY  
Page 701  
Dec 01/95

01.1

- I. Remove rigging pin and lockwire nuts (105) using MS20995 CRES lockwire 0.03 inch diameter per 20-50-02.
3. Store this component using standard industry practices and information contained in 20-44-02.

**52-11-85**

ASSEMBLY  
Page 702  
Apr 10/87

01.101



SPECIAL TOOLS, FIXTURES, AND EQUIPMENT

NOTE: Equivalent substitutes may be used.

1. Rigging pin -- 0.310 inch diameter

**52-11-85**

SPECIAL TOOLS

01

Page 901

Oct 10/84

ILLUSTRATED PARTS LIST

1. This section lists and illustrates replaceable or repairable component parts. The Illustrated Parts Catalog contains a complete explanation of the Boeing part numbering system.

2. Indentures show parts relationships as follows:

Assembly

Detail Parts for Assembly

Subassembly

Attaching Parts for Subassembly

Detail Parts for Subassembly

Detail Installation Parts (Included only if installation parts may be returned to shop as part of assembly)

3. One use code letter (A, B, C, etc.) is assigned in the EFF CODE column for each variation of top assembly. All listed parts are used on all top assemblies except when limitations are shown by use code letter opposite individual part entries.

4. Letter suffixes (alpha-variants) are added to item numbers for optional parts, Service Bulletin modification parts, configuration differences (Except left- and right-hand parts), product improvement parts, and parts added between two sequential item numbers. The alpha-variant is not shown on illustrations when appearance and location of all variants of the part is the same.

5. Service Bulletin modifications are shown by the notations PRE SB XXXX and POST SB XXXX.

A. When a new top assembly part number is assigned by Service Bulletin, the notations appear at the top assembly level only. The configuration differences at detail part level are then shown by use code letter.

B. When the top assembly part number is not changed by the Service Bulletin, the notations appear at the detail part level.

6. Parts Interchangeability

Optional  
(OPT)

The parts are optional to and interchangeable with other parts having the same item number.

Supersedes, Superseded By  
(SUPSDS, SUPSD BY)

The part supersedes and is not interchangeable with the original part.

Replaces, Replaced By  
(REPLS, REPLD BY)

The part replaces and is interchangeable with, or is an alternate to, the original part.

**52-11-85**

ILLUSTRATED PARTS LIST

01

Page 1001

Oct 10/84

VENDORS

OPTK6 SPS TECHNOLOGIES INC AEROSPACE PRODUCTS DIV  
5195 W 4700 SPO BOX 18459  
KEARNS, UTAH 84118

08073 MAMCO MANUFACTURING CO INC  
1411 NORTHWEST 50TH  
SEATTLE, WASHINGTON 98107-5123

10630 ANILLO INDUSTRIES, INCORPORATED  
2090 NORTH GLASSELL  
ORANGE, CALIFORNIA 92667

11815 CHERRY AEROSPACE FASTENERS DIV OF TEXTRON  
1224 EAST WARNER AVENUE PO BOX 2157  
SANTA ANA, CALIFORNIA 92707-0157

15653 KAYNAR TECHNOLOGY KAYNAR DIV  
800 SOUTH STATE COLLEGE BLVD PO BOX 3001  
FULLERTON, CALIFORNIA 92634-3001

15805 FURON A E C  
3711 SOUTH HUDSON STREET  
SEATTLE, WASHINGTON 98118-1919

21335 TORRINGTON CO FAFNIR BEARING DIV  
59 FIELD STREET  
TORRINGTON, CONNECTICUT 06790-4942

30163 VALENTEC DAYRON INC  
333 MAGUIRE BLVD PO BOX 140394  
ORLANDO, FLORIDA 32814-0394

38443 MRC BEARINGS  
402 CHANDLER STREET  
JAMESTOWN, NEW YORK 14701-3802

**52-11-85**

ILLUSTRATED PARTS LIST  
01.1 Page 1002  
Dec 01/95

VENDORS

43991 FAG BEARING INCORPORATED  
118 HAMILTON AVENUE  
STAMFORD, CONNECTICUT 06904

52828 REPUBLIC FASTENER MFG CORP  
1300 RANCHO CONEJO BLVD  
NEWBURY PARK, CALIFORNIA 91320-1405

60516 WEST COAST AEROSPACE INC  
812 MIRAFLORES STREET  
SAN PEDRO, CALIFORNIA 90731-1439

62554 SIMMONDS MECAERO FASTENERS INC  
1734 SEQUOIA AVENUE  
ORANGE, CALIFORNIA 92668

72962 ELASTIC STOP NUT A DIV OF HARTFORD INDUSTRIES INC  
2330 VAUXHALL ROAD  
UNION, NEW JERSEY 07083-5038

77896 REXNORD INC BEARING OPERATION  
2400 CURTIS STREET  
DOWNERS GROVE, ILLINOIS 60515-4005

80539 SPS TECHNOLOGIES INC AEROSPACE PRODUCTS DIV  
2701 SOUTH HARBOR BOULEVARD PO BOX 1259  
SANTA ANA, CALIFORNIA 92702-1259

83086 NEW HAMPSHIRE BALL BEARINGS, INCORPORATED  
ROUTE 202  
PETERBOROUGH, NEW HAMPSHIRE 03458

92215 FAIRCHILD IND INC FAIRCHILD AEROSP FASTNR DIV DESIGN & ENGRG  
3000 WEST LOMITA BLVD  
TORRANCE, CALIFORNIA 90505-5102

**52-11-85**ILLUSTRATED PARTS LIST  
01.1 Page 1003  
Dec 01/95

PART NUMBER	AIRLINE PART NO.	FIG.	ITEM	TTL REQ
AN960-516		1	100	1
AN960C10L		1	10	1
		1	165A	1
AN960XC10L		1	165	1
BACB10BW16		1	140B	2
		1	150	2
		1	153	4
BACB28AK06-027		1	55	1
BACB28AK08021		1	115	2
BACB28X6E020		1	60	1
		1	120	2
BACB28Y6E027		1	125	2
BACB28Y9E021		1	50	1
BACB30LT3U7		1	160	1
BACB30LT6U20		1	30	2
BACB30MY6K20		1	5A	1
BACB30NM3K20		1	75A	1
BACB30NM3K7		1	160A	1
BACN10JC3CM		1	15	1
		1	85	1
		1	170A	1
BACN10JC6CM		1	40	2
BACN10JP3A		1	200	2
		1	220	3
BACN10JP3C		1	195	2
		1	215	1
BACN10JP4C		1	185	8
BACN10YR3CM		1	170B	1
BACR12Y49		1	155	2
BACR15BB6AD7		1	143	6
BACR15DR3		1	180A	16
		1	190A	8
		1	210A	8

# 52-11-85

 ILLUSTRATED PARTS LIST  
 01.1 Page 1004  
 Dec 01/95




**BOEING**  
 COMPONENT  
 MAINTENANCE MANUAL

PART NUMBER	AIRLINE PART NO.	FIG.	ITEM	TTL REQ
BACR15DR3D		1	180	16
		1	190	8
		1	210	8
BACW10BN6UC		1	35	2
		1	200	2
BRM200A3		1	220	3
		1	195	2
BRM300A3		1	215	1
		1	185	8
BRM300A4		1	70	1
		1	5A	1
DDR6-85A1-501		1	15	1
		1	85	1
HL10VAZ6-20		1	170A	1
		1	40	2
H01-3BAC		1	170B	1
		1	140B	2
H01-6BAC		1	150	2
		1	153	2
H52732-3CM		1	153	2
		1	140B	2
KP16B		1	150	2
		1	153	2
KP16BFS428		1	140B	2
		1	150	2
KP16BG27		1	153	4
		1	140B	2
KP16BSD610		1	150	2
		1	153	4
KP16B2TS		1	140B	2
		1	150	2
LLKP16B		1	153	4
		1	140B	2
		1	150	2
		1	153	4

52-11-85

 ILLUSTRATED PARTS LIST  
 01.1 Page 1005  
 Mar 01/96

PART NUMBER	AIRLINE PART NO.	FIG.	ITEM	TTL REQ
MK1000-3BAC		1	200	2
		1	220	3
MK3000-3BAC		1	195	2
		1	215	1
MK3000-4BAC		1	185	8
NAS509-5		1	105	2
NAS565-31		1	95	1
NAS620A10L		1	80	2
NS103197-02		1	200	2
		1	220	3
NS103199-02		1	195	2
		1	215	1
NS103199-048		1	185	8
NS202101SE02		1	15	1
		1	85	1
		1	170A	1
RMA9201M3		1	200	2
		1	220	3
RMA9205M3		1	195	2
		1	215	1
RMA9205M4		1	185	8
SAT16-24A1-501		1	140A	2
S012T236-201		1	70	1
T6C1032JM		1	15	1
		1	85	1
		1	170A	1
T8076S1032		1	200	2
		1	220	3
T8078S1032		1	195	2
		1	215	1
T8078S428		1	185	8
VN202A1-02		1	200	2
		1	220	3
VN203A1-02		1	195	2
		1	215	1
VN203A1-048		1	185	8
VN303D02		1	15	1
		1	85	1
		1	170A	1
102LH9075-6		1	40	2
109LH9075-3W		1	15	1
		1	85	1
		1	170A	1

52-11-85

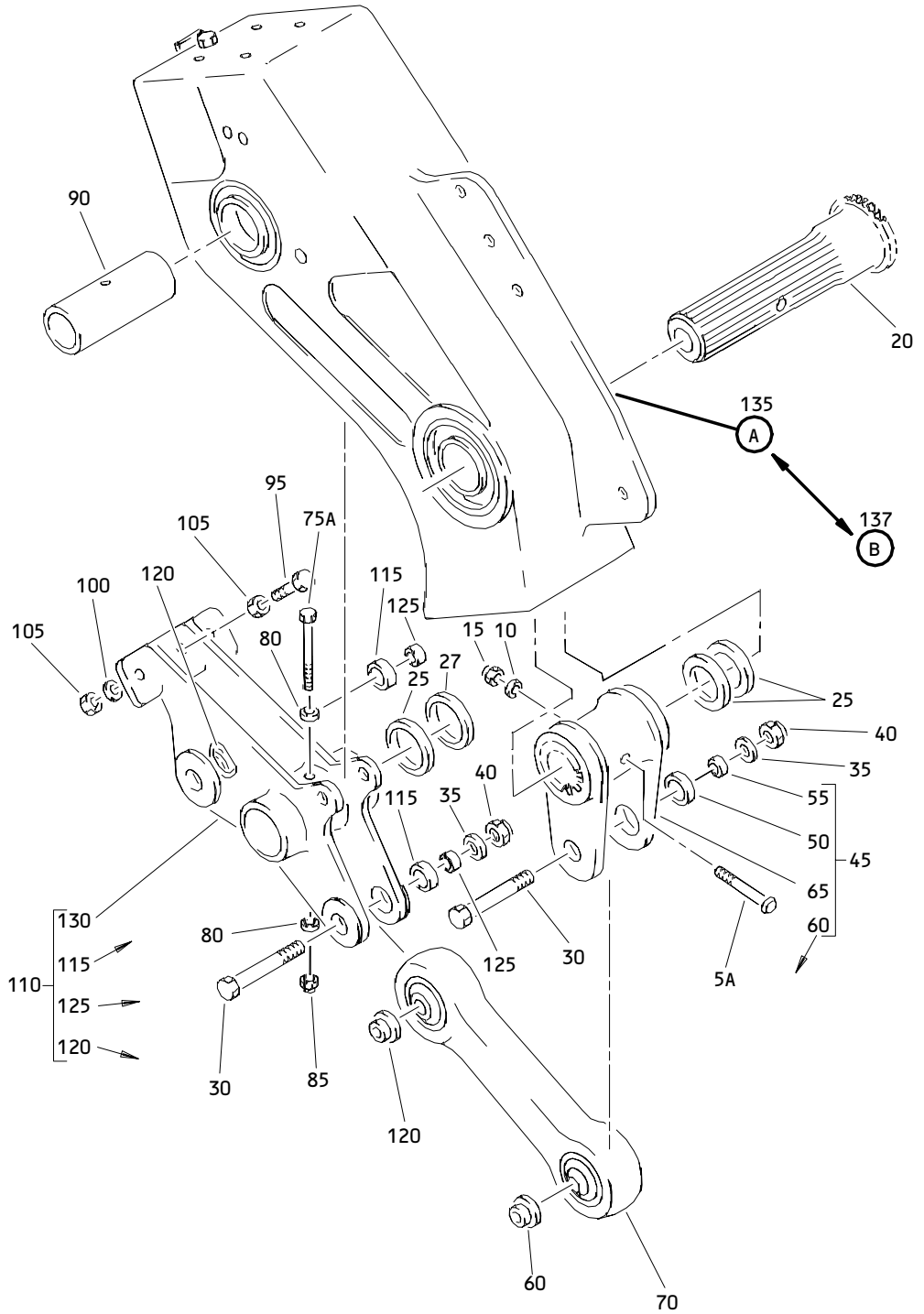
 ILLUSTRATED PARTS LIST  
 01.1 Page 1006  
 Dec 01/95


**BOEING**  
 COMPONENT  
 MAINTENANCE MANUAL

PART NUMBER	AIRLINE PART NO.	FIG.	ITEM	TTL REQ
141T6134-11		1	1B	RF
141T6163-2		1	20	1
141T6164-2		1	90	1
141T6164-3		1	90A	1
141T6166-5		1	110	1
141T6166-6		1	130	1
141T6166-7		1	110A	1
141T6166-8		1	130A	1
141T6167-3		1	45	1
141T6167-4		1	65	1
141T6172-1		1	205A	1
141T6172-17		1	135	1
141T6172-18		1	137	1
141T6172-2		1	225A	1
141T6172-3		1	205	1
141T6172-33		1	135B	1
141T6172-34		1	137A	1
141T6172-35		1	205B	1
141T6172-36		1	225B	1
141T6172-4		1	225	1
141T6178-1		1	25	3
		1	27	1
141T6218-1		1	175	1
141T6989-1		1	142	2
146T6153-9		1	145	2
60B00178-200		1	140A	2
97E02		1	15	1
		1	85	1
		1	170A	1
97E064		1	40	2

52-11-85

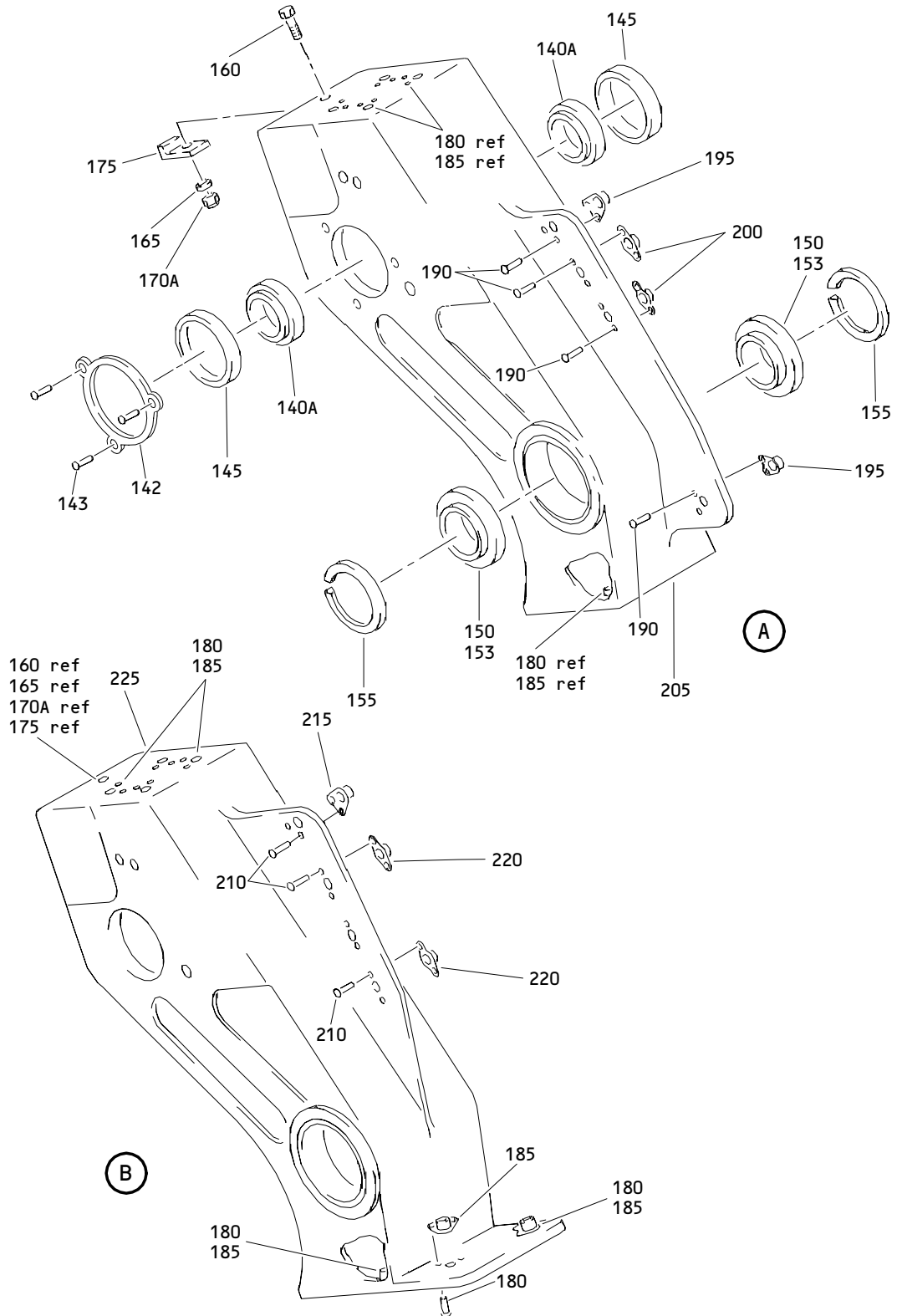
 ILLUSTRATED PARTS LIST  
 01.1 Page 1007  
 Dec 01/95



Section 41 Entry/Service Doors Overcenter Mechanism Assembly  
Figure 1 (Sheet 1)

**52-11-85**

ILLUSTRATED PARTS LIST  
01.1 Page 1009  
Dec 01/95



Section 41 Entry/Service Doors Overcenter Mechanism Assembly  
 Figure 1 (Sheet 2)

**52-11-85**

ILLUSTRATED PARTS LIST  
 01.1 Page 1010  
 Dec 01/95


**BOEING**  
 COMPONENT  
 MAINTENANCE MANUAL

FIG. & ITEM	PART NO.	AIRLINE PART NUMBER	NOMENCLATURE 1234567	EFF CODE	QTY PER ASSY
01- -1	141T6134-7		MECHANISM ASSY-ENTRY/SVCE DOORS OVERCTR	A	RF
-1A	141T6134-8		MECHANISM ASSY-ENTRY/SVCE DOORS OVERCTR	B	RF
-1B	141T6134-11		MECHANISM ASSY-ENTRY/SVCE DOORS OVERCTR	C	RF
-1C	141T6134-12		MECHANISM ASSY-ENTRY/SVCE DOORS OVERCTR	D	RF
5 5A	BACB30MY6K22 HL10VAZ6-20		DELETED .BOLT- (V60516) (SPEC BACB30MY6K20) (OPT HL10VAZ6-20 (VOPTK6))		1
10 15	AN960C10L H01-3BAC		.WASHER .NUT- (V15653) (SPEC BACN10JC3CM) (OPT NS202101SE02 (V80539)) (OPT T6C1032JM (V11815)) (OPT VN303D02 (V92215)) (OPT 109LH9075-3W (V72962)) (OPT 97E02 (V80539))		1 1
20	141T6163-2		.SHAFT-DRIVE		1
25	141T6178-1		.RING-SPACER		3
R 27	141T6178-1		.RING-SPACER (POST SB 767-52-0056)	A,B	1
R -27A	141T6178-1		.RING-SPACER	C,D	1

52-11-85

 ILLUSTRATED PARTS LIST  
 01.1 Page 1011  
 Dec 01/95

FIG. & ITEM	PART NO.	AIRLINE PART NUMBER	NOMENCLATURE 1234567	EFF CODE	QTY PER ASSY
01-30	BACB30LT6U20		.BOLT		2
35	BACW10BN6UC		.WASHER- (V10630) (SPEC BACW10BN6UC)		2
40	H01-6BAC		.NUT- (V15653) (SPEC BACN10JC6CM) (OPT 102LH9075-6 (V72962)) (OPT 97E064 (V80539))		2
45	141T6167-3		.CRANK ASSY-DRIVE SHAFT		1
50	BACB28Y9E021		..BUSHING		1
55	BACB28AK06-027		..BUSHING		1
60	BACB28X6E020		..BUSHING		1
65	141T6167-4		..CRANK		1
70	DDR6-85A1-501		.LINK- (V77896) (SPEC S012T236-201)		1
75	BACB30NM3K23		DELETED		
75A	BACB30NM3K20		.BOLT		1
80	NAS620A10L		.WASHER		2
85	H01-3BAC		.NUT- (V15653) (SPEC BACN10JC3CM) (OPT NS202101SE02 (V80539)) (OPT T6C1032JM (V11815)) (OPT VN303D02 (V92215)) (OPT 109LH9075-3W (V72962)) (OPT 97E02 (V80539))		1

52-11-85

ILLUSTRATED PARTS LIST

01.1

Page 1012

Dec 01/95


**BOEING**  
 COMPONENT  
 MAINTENANCE MANUAL

FIG. & ITEM	PART NO.	AIRLINE PART NUMBER	NOMENCLATURE 1234567	EFF CODE	QTY PER ASSY
01-90	141T6164-2		.SLEEVE-PIVOT (PRE SB 767-52-0056)	A,B	1
-90A	141T6164-3		.SLEEVE-PIVOT	C,D	1
-90B	141T6164-3		.SLEEVE-PIVOT (POST SB 767-52-0056)	A,B	1
95	NAS565-31		.BOLT		1
100	AN960-516		.WASHER		1
105	NAS509-5		.NUT		2
110	141T6166-5		.CRANK ASSY- (PRE SB 767-52-0056)	A,B	1
-110A	141T6166-7		.CRANK ASSY	C,D	1
-110B	141T6166-7		.CRANK ASSY- (POST SB 767-52-0056)	A,B	1
115	BACB28AK08021		..BUSHING		2
120	BACB28X6E020		..BUSHING		2
125	BACB28Y6E027		..BUSHING		2
130	141T6166-6		..CRANK- (USED ON ITEM 110)	A,B	1
-130A	141T6166-8		..CRANK- (USED ON ITEMS 110A, 110B)		1
135	141T6172-17		.HOUSING ASSY- (PRE SB 767-52-0056)	A	1
135A	141T6172-18		DELETED		
-135B	141T6172-33		.HOUSING ASSY	C	1
-135C	141T6172-33		.HOUSING ASSY- (POST SB 767-52-0056)	A	1
137	141T6172-18		.HOUSING ASSY- (PRE SB 767-52-0056)	B	1
-137A	141T6172-34		.HOUSING ASSY	D	1
-137B	141T6172-34		.HOUSING ASSY- (POST SB 767-52-0056)	B	1

52-11-85

 ILLUSTRATED PARTS LIST  
 01.1 Page 1013  
 Dec 01/95



FIG. & ITEM	PART NO.	AIRLINE PART NUMBER	NOMENCLATURE	EFF CODE	QTY PER ASSY
			1234567		
01-140 140A	SAT12-20A1-501 SAT16-24A1-501		DELETED ..BEARING- (V77896) (SPEC 60B00178-200) (USED ON ITEMS 135, 137) (PRE SB 767-52-0056)	A,B	2
-140B	KP16B		..BEARING- (V38443) (SPEC BACB10BW16) (OPT KP16B2TS (V43991)) (OPT LLKP16B (V38443)) (OPT KP16BG27 (V30163)) (OPT KP16BFS428 (V21335)) (OPT KP16BSD610 (V83086)) (USED ON ITEMS 135C, 137B) (POST SB 767-52-0056)	A,B	2
R -140C	KP16B		..BEARING- (V38443) (SPEC BACB10BW16) (OPT KP16B2TS (V43991)) (OPT LLKP16B (V38443)) (OPT KP16BG27 (V30163)) (OPT KP16BFS428 (V21335)) (OPT KP16BSD610 (V83086)) (USED ON ITEMS 135B, 137A)	C,D	2

52-11-85

ILLUSTRATED PARTS LIST

01.1

Page 1014

Dec 01/95


**BOEING**  
 COMPONENT  
 MAINTENANCE MANUAL

FIG. & ITEM	PART NO.	AIRLINE PART NUMBER	NOMENCLATURE 1234567	EFF CODE	QTY PER ASSY
01-142	141T6989-1		..RETAINER-BEARING (USED ON ITEMS 135C, 137B) (POST SB 767-52-0056)	A,B	2
143	BACR15BB6AD7		..RIVETS (USED WITH ITEM 142) (POST SB 767-52-0056)	A,B	6
145	146T6153-9		..SLEEVE-SPLIT (USED ON ITEMS 135, 137) (PRE SB 767-52-0056)	A,B	2
-145A 150	141T6521-2 KP16B		DELETED ..BEARING- (V38443) (SPEC BACB10BW16) (OPT KP16B2TS (V43991)) (OPT LLKP16B (V38443)) (OPT KP16BG27 (V30163)) (OPT KP16BFS428 (V21335)) (OPT KP16BSD610 (V83086))	A,B	2
153	KP16B		..BEARING- (V38443) (SPEC BACB10BW16) (OPT KP16B2TS (V43991)) (OPT LLKP16B (V38443)) (OPT KP16BG27 (V30163)) (OPT KP16BFS428 (V21335)) (OPT KP16BSD610 (V83086))	C,D	2
155	BACR12Y49		..RING- (V08073) (SPEC BACR12Y49) (OPT BACR12Y49 (V15805)) (USED ON ITEMS 135,135C, 137,137B)	A,B	2

52-11-85

ILLUSTRATED PARTS LIST

01.1

Page 1015

Mar 01/96

FIG. & ITEM	PART NO.	AIRLINE PART NUMBER	NOMENCLATURE 1234567	EFF CODE	QTY PER ASSY
01-160	BACB30LT3U7		..BOLT- (USED ON ITEMS 135, 135C,137,137B)	A,B	1
-160A	BACB30NM3K7		..BOLT (USED ON ITEMS 135B, 137A)	C,D	1
165	AN960XC10L		..WASHER- (USED ON ITEMS 135, 135C,137,137B)	A,B	1
-165A	AN960C10L		..WASHER- (USED ON ITEMS 135B, 137A)	C,D	1
170 170A	BACN10JC3M H01-3BAC		DELETED ..NUT- (V15653) (SPEC BACN10JC3CM) (OPT NS202101SE02 (V80539)) (OPT T6C1032JM (V11815)) (OPT VN303D02 (V92215)) (OPT 109LH9075-3W (V72962)) (OPT 97E02 (V80539)) (USED ON ITEMS 135, 135C, 137, 137B)	A,B	1
-170B	H52732-3CM		..NUT- (V15653) (SPEC BACN10YR3CM) (OPT PLH53CM (V62554)) (USED ON ITEMS 135B, 137A)	C,D	1

52-11-85

ILLUSTRATED PARTS LIST

01.1

Page 1016

Dec 01/95

**BOEING**  
 COMPONENT  
 MAINTENANCE MANUAL

FIG. & ITEM	PART NO.	AIRLINE PART NUMBER	NOMENCLATURE 1234567	EFF CODE	QTY PER ASSY
01-175	141T6218-1		..CAP		1
180	BACR15DR3D		..RIVET- (SIZE DETERMINE ON INST) (USED ON ITEMS 135,135C, 137,137B)	A,B	16
-180A	BACR15DR3		..RIVET- (SIZE DETERMINE ON INST) (USED ON ITEMS 135B, 137A)	C,D	16
185	BRM300A4		..NUTPLATE- (V52828) (SPEC BACN10JP4C) (OPT MK3000-4BAC (V15653)) (OPT NS103199-048 (V80539)) (OPT RMA9205M4 (V72962)) (OPT T8078S428 (V11815)) (OPT VN203A1-048 (V92215))		8
190	BACR15DR3D		..RIVET- (SIZE DETERMINE ON INST) (USED ON ITEMS 135, 135C)	A	8
-190A	BACR15DR3		..RIVET- (SIZE DETERMINE ON INST) (USED ON ITEM 135B)	C	8

**52-11-85**

ILLUSTRATED PARTS LIST  
 01.1 Page 1017  
 Dec 01/95

FIG. & ITEM	PART NO.	AIRLINE PART NUMBER	NOMENCLATURE 1234567	EFF CODE	QTY PER ASSY
01-195	BRM300A3		..NUTPLATE- (V52828) (SPEC BACN10JP3C) (OPT MK3000-3BAC (V15653)) (OPT NS103199-02 (V80539)) (OPT RMA9205M3 (V72962)) (OPT T8078S1032 (V11815)) (OPT VN203A1-02 (V92215))	A,C	2
200	BRM200A3		..NUTPLATE- (V52828) (SPEC BACN10JP3A) (OPT MK1000-3BAC (V15653)) (OPT NS103197-02 (V80539)) (OPT RMA9201M3 (V72962)) (OPT T8076S1032 (V11815)) (OPT VN202A1-02 (V92215))	A,C	2
205	141T6172-3		..HOUSING- (OPT ITEM 205A) (USED ON ITEM 135)	A	1
-205A	141T6172-1		..HOUSING- (OPT ITEM 205) (USED ON ITEM 135)	A	1
-205B	141T6172-35		..HOUSING- (USED ON ITEMS 135B, 135C)	A,C	1
210	BACR15DR3D		..RIVET- (SIZE DETERMINE ON INST) (USED ON ITEMS 137, 137B)	B	8
-210A	BACR15DR3		..RIVET- (SIZE DETERMINE ON INST) (USED ON ITEM 137A)	D	8

52-11-85

 ILLUSTRATED PARTS LIST  
 01.1 Page 1018  
 Dec 01/95


**BOEING**  
 COMPONENT  
 MAINTENANCE MANUAL

FIG. & ITEM	PART NO.	AIRLINE PART NUMBER	NOMENCLATURE 1234567	EFF CODE	QTY PER ASSY
01-215	BRM300A3		..NUTPLATE- (V52828) (SPEC BACN10JP3C) (OPT MK3000-3BAC (V15653)) (OPT NS103199-02 (V80539)) (OPT RMA9205M3 (V72962)) (OPT T8078S1032 (V11815)) (OPT VN203A1-02 (V92215))	B,D	1
220	BRM200A3		..NUTPLATE- (V52828) (SPEC BACN10JP3A) (OPT MK1000-3BAC (V15653)) (OPT NS103197-02 (V80539)) (OPT RMA9201M3 (V72962)) (OPT T8076S1032 (V11815)) (OPT VN202A1-02 (V92215))	B,D	3
225	141T6172-4		..HOUSING- (OPT ITEM 225A) (USED ON ITEM 137)	B	1
-225A	141T6172-2		..HOUSING- (OPT ITEM 225) (USED ON ITEM 137)	B	1
-225B	141T6172-36		..HOUSING- (USED ON ITEMS 137A, 137B)	B,D	1

52-11-85

ILLUSTRATED PARTS LIST

01.1

Page 1019

Dec 01/95